

EXPLORING MOLD MUSEUM *Family Activities*



ACTIVITIES

MOLD MUSEUM MYSTERY OBJECTS

AMAZING ARCHAEOLOGISTS

TREASURE DESIGNERS

INSPIRED WRITERS/POETS

EISTEDDFOD PERFORMERS

TREMENDOUS TAILORS

HIGH STREET CREATORS

HISTORIC HORSE & CART



MOLD MUSEUM MYSTERY OBJECTS



Mold Museum tells the story of Mold from thousands of years ago to today. On display there are many fascinating objects from Bronze age treasures, Victorian household objects to those telling stories of local people.

Each object tells a story but it is not always clear what some things are at first.

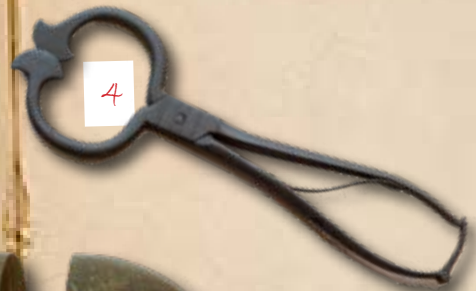
Can you...

Create a story about each object?

- Using [Activity Sheet 1](#) write your object story
- Think about:
 1. What is it made of?
 2. What might it be used for?
 3. What is special about it?
 4. Who might wear it/use it?
 5. What is it?
 6. Who made it?
- You can create any story you like. It doesn't matter if it is correct. Use your imagination!
- Once you have written your own ideas you can find out what the objects are on the bottom of [Activity Sheet 3](#).

Materials needed

- [Activity Sheet 1](#)
- Pencil/pen



1



2



3



4



5



6



7



AMAZING ARCHAEOLOGISTS



Mold Museum has a number of different archaeological finds from the Bronze Age and Viking periods. These have been found by archaeologists near Mold.

Archaeologists find clues about the past by digging in the ground. These special digs are called excavations. It is possible to find pottery, ancient tools, seeds, bones or the remains of buildings.

Can you...
Become an archaeologist?

- Imagine you are an archaeologist and you have found:
 1. Bronze Age Mold Cape
 2. A Viking Ring
 3. A woman's Bronze Age necklace
- Write a short museum label about each object using [Activity Sheet 2](#)

Idea: Why not research the Mold Cape, Vikings in North Wales, Bronze Age women.

- Think about:
 1. Who wore them?
 2. What the objects are made from?
 3. What is special about them?
- Why not find out more about interesting objects in your house and write labels for them!

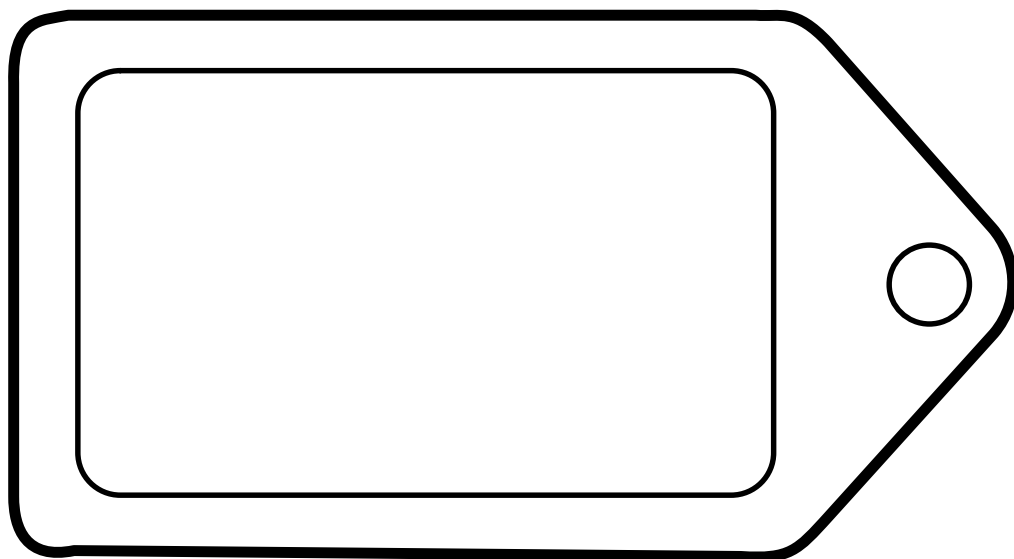


Materials needed

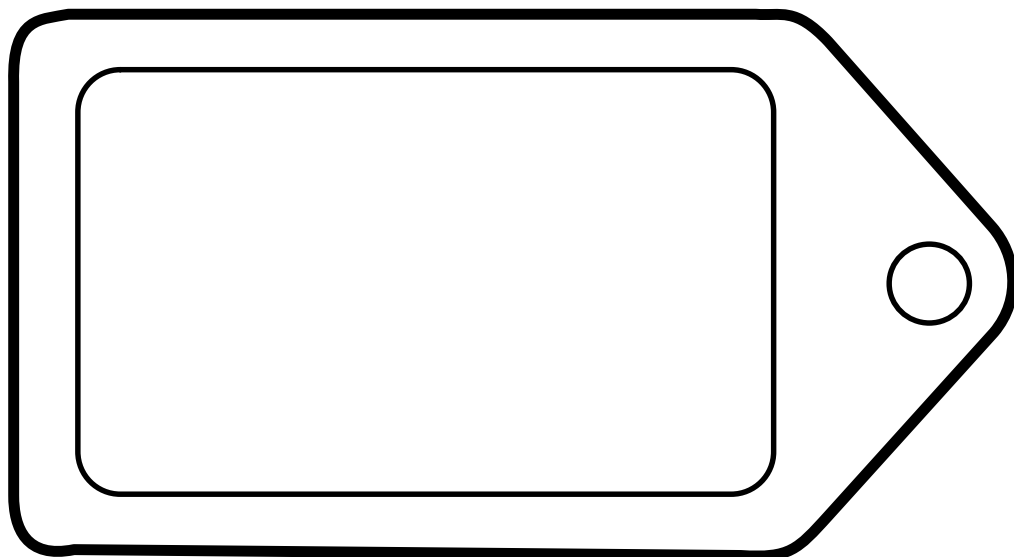
- [Activity Sheet 2](#)
- Pencil/pen



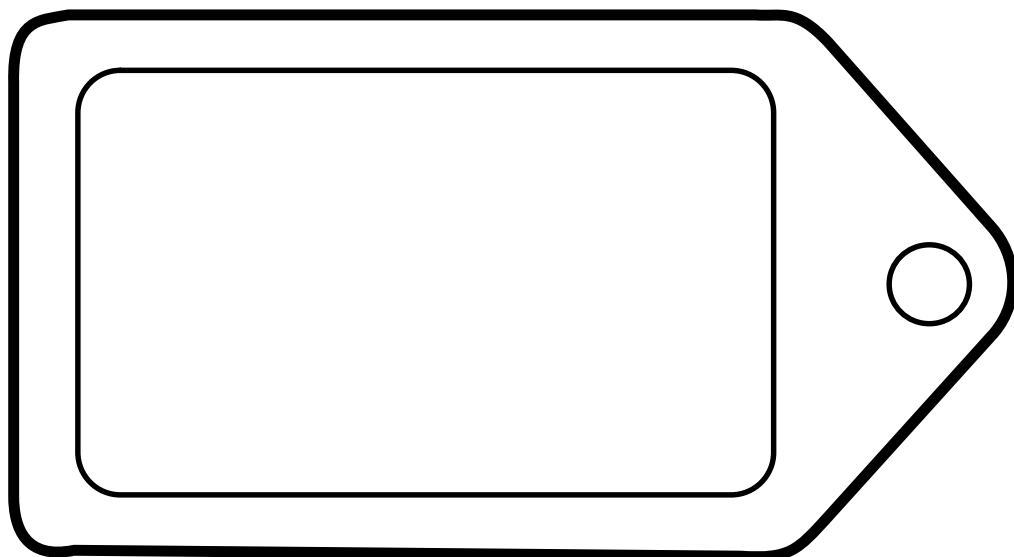
Bronze Age Mold Cape



A Viking Ring



A woman's Bronze Age necklace



TREASURE DESIGNERS



The objects found by archaeologists are very old and over time they have broken or faded from their original colour. Archaeologists have to use clues to piece together a picture or idea of what an object would have looked like.

Can you...

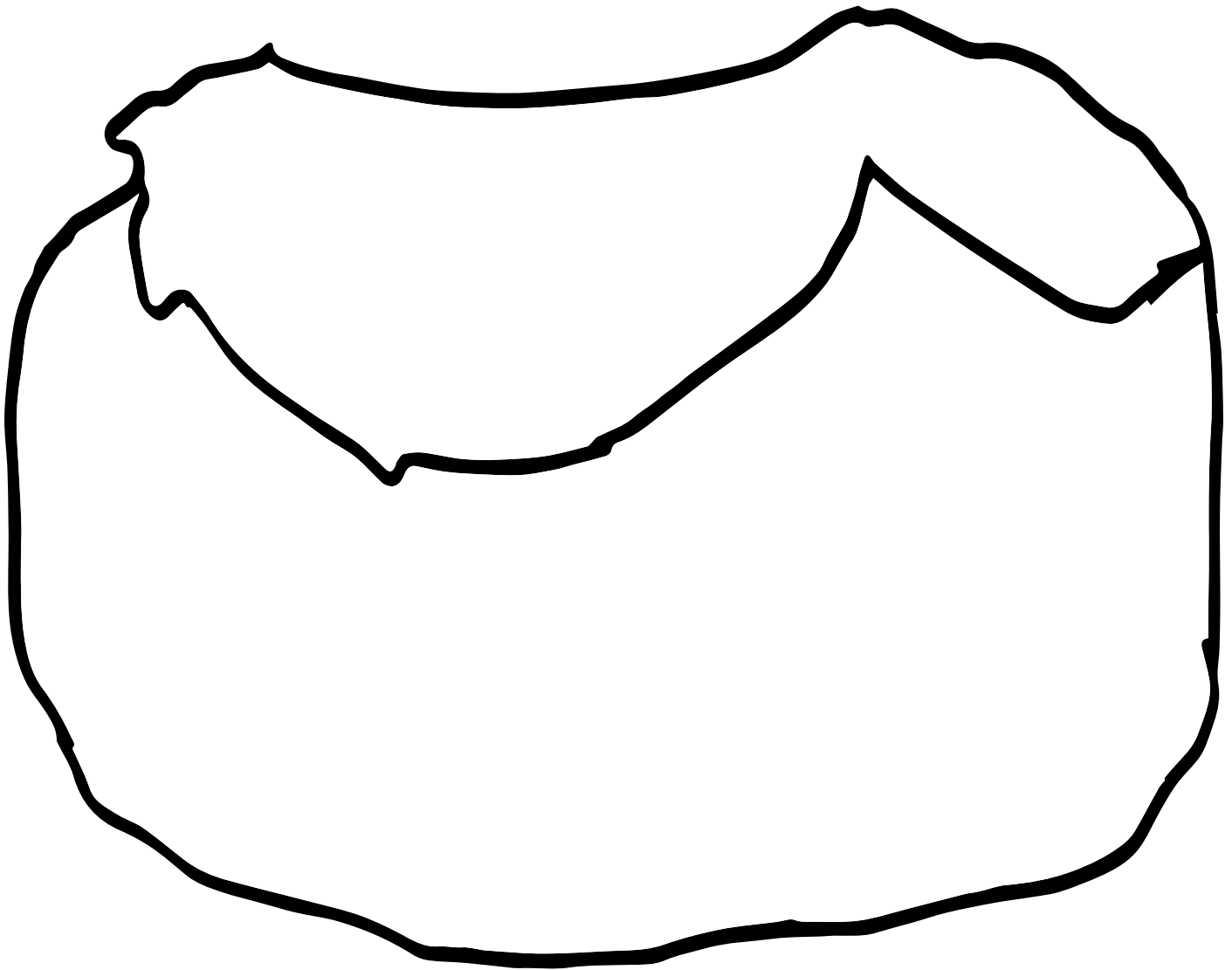
Become a historic treasure designer?

- Use the template on [Activity Sheet 3](#) to draw your own Mold cape and jewellery designs.
 1. What colour would it be?
 2. What patterns would it have on it?
- Use [Activity Sheet 4](#) and the figure templates to draw a person wearing the jewellery.
- How would a Bronze Age person or a Viking dress?
- Is it a man, woman or child?

Materials needed

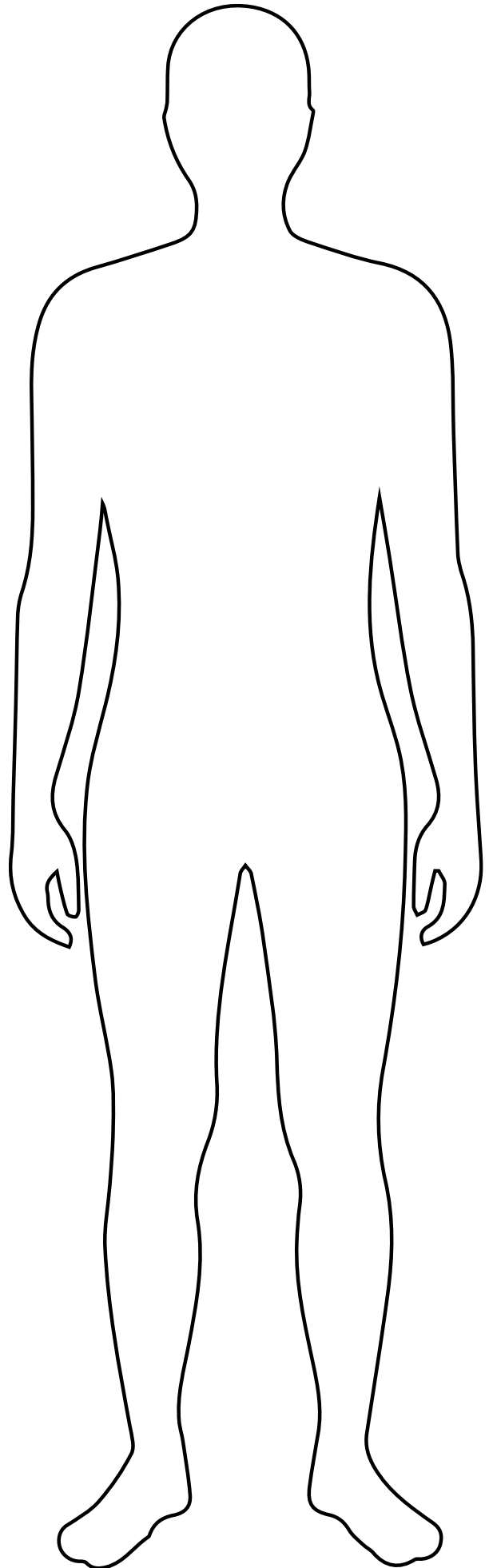
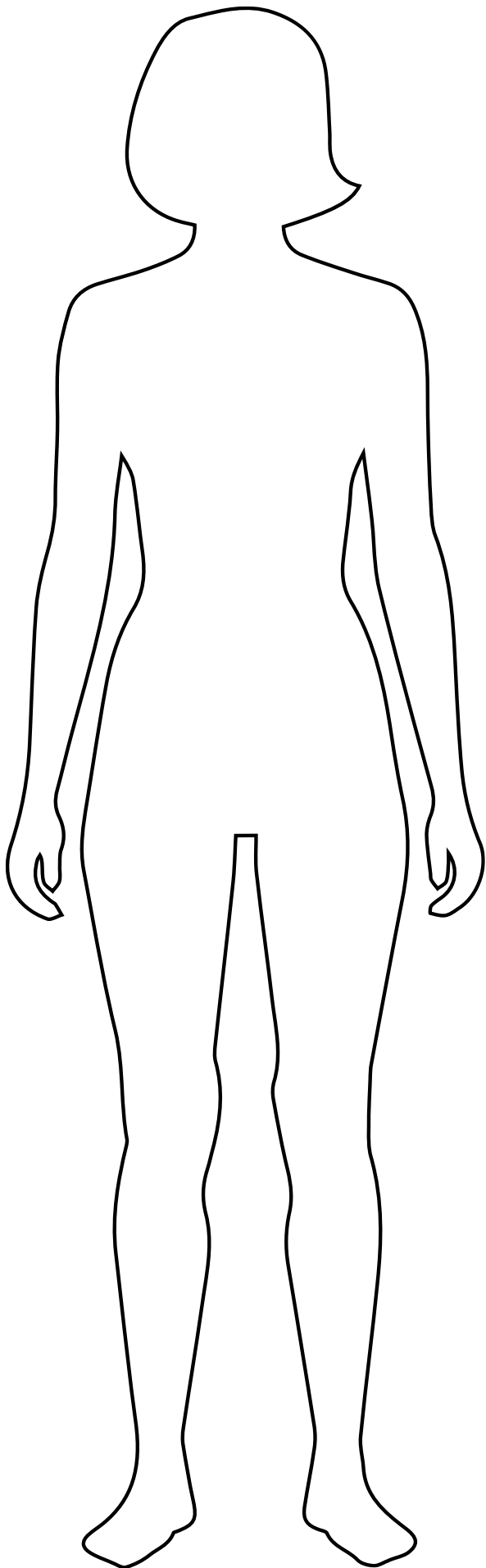
- [Activity Sheet 3](#)
- [Activity Sheet 4](#)
- Coloured pencils/pens





Answers for Activity Sheet 1

1. Mold gold cape
2. Bronze age axe heads
3. Coachman hat from Soughton Hall
4. Victorian Sugar loaf nippers from Mrs Tapper's family
5. Ivory Tatting shuttles from Miss Evans
6. Jaw bone of a horse from Gop cave
7. Hat stretcher from Daniel Owen's shop



INSPIRED WRITERS AND POETS



Reverend John Blackwell, born in 1797 near Mold, wrote stories and poems in Welsh about his local area which won him medals at local Eisteddfods. Daniel Owen was also a famous Welsh novelist who wrote stories in Welsh about his home town Mold.

Can you:
Become a writer or poet?

- Choose which type of writing you want to do: a short story or a poem (rhyming, acrostic, haikus, shape poem).
- Write a list of words about your home, your home town, the things in it and the people who live there.
- Think of ways to make these words more interesting by using the poetry tools provided or adding descriptive words.
- Add in a character or real person into your writing and describe their features.
- Using [Activity Sheet 5](#) write out your story or poem.

Poetry tools

Personification: This makes something which isn't human (such as an object or an animal) sound more human by giving it human characteristics.

[The sunshine bathed me in a warm glow](#)

Metaphor: This is a way of reimagining something by saying something IS something else. They are usually two different things but can help create an image in a poem.

[She is a shining star](#)

Similes: These use 'LIKE' or 'AS' to compare two different things.

[On my adventures I am as brave as a lion](#)

Senses: Using different senses can help you create your poem.

Onomatopoeia: This is a sound which also makes a word. They give poetry rhythm.

[giggle, buzz, flap](#)

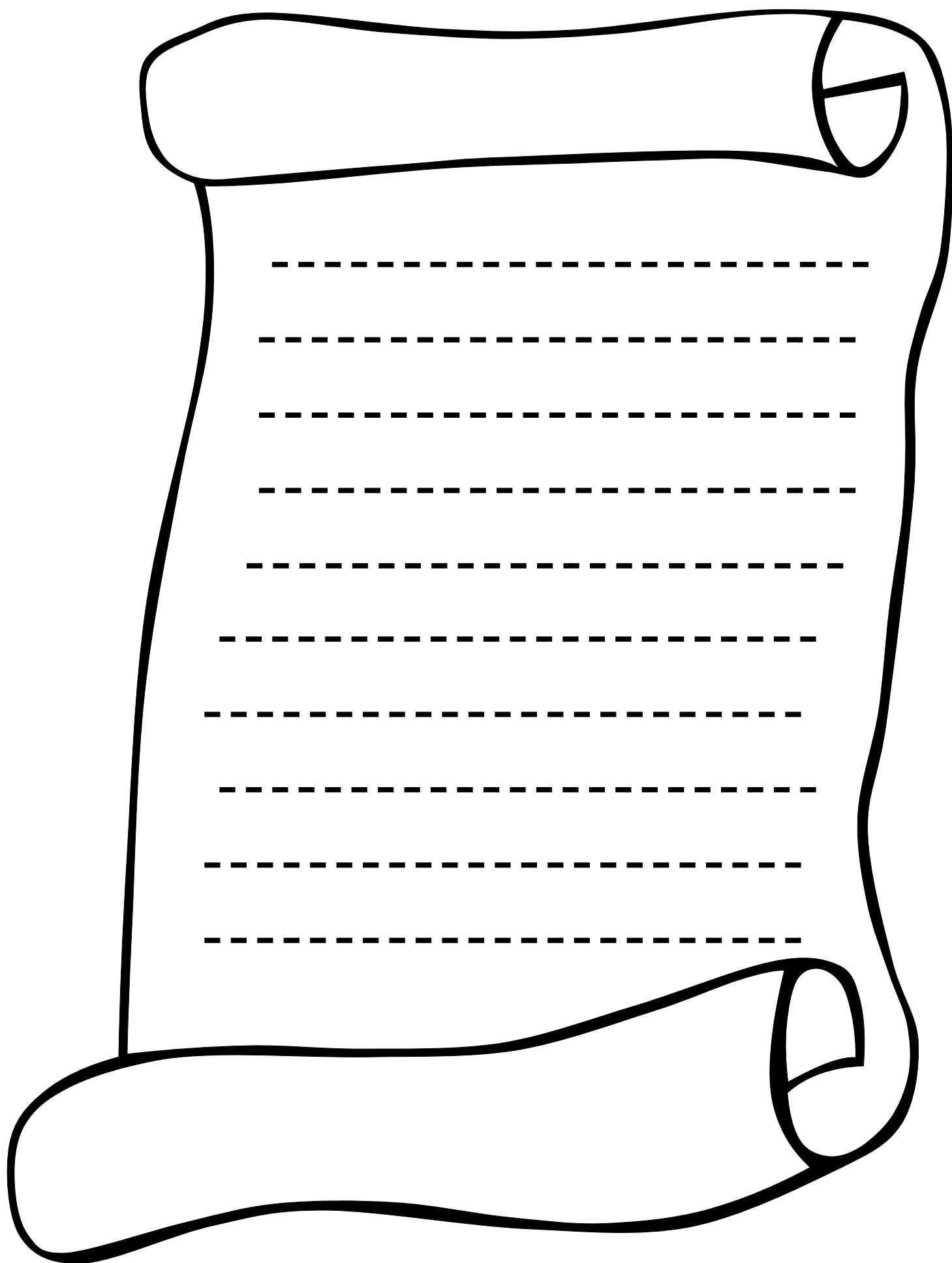
Alliteration: This is where each word starts with the same letter.

[Bouncing balls in the backyard](#)

Materials needed

- [Activity sheet 5](#)
- Pencil/pen
- Poem tools





EISTEDDFOD PERFORMERS



Eisteddfods are festivals where poets, musicians and writers compete and the very best win prizes. Reverend John Blackwell won medals for his writing and poetry.

Can you...

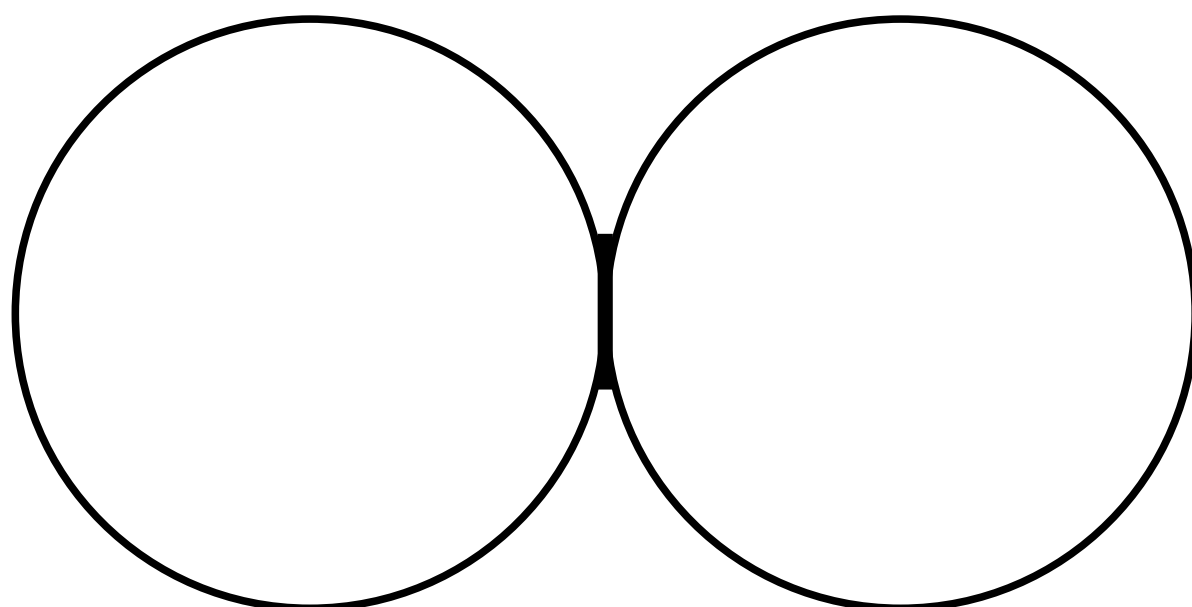
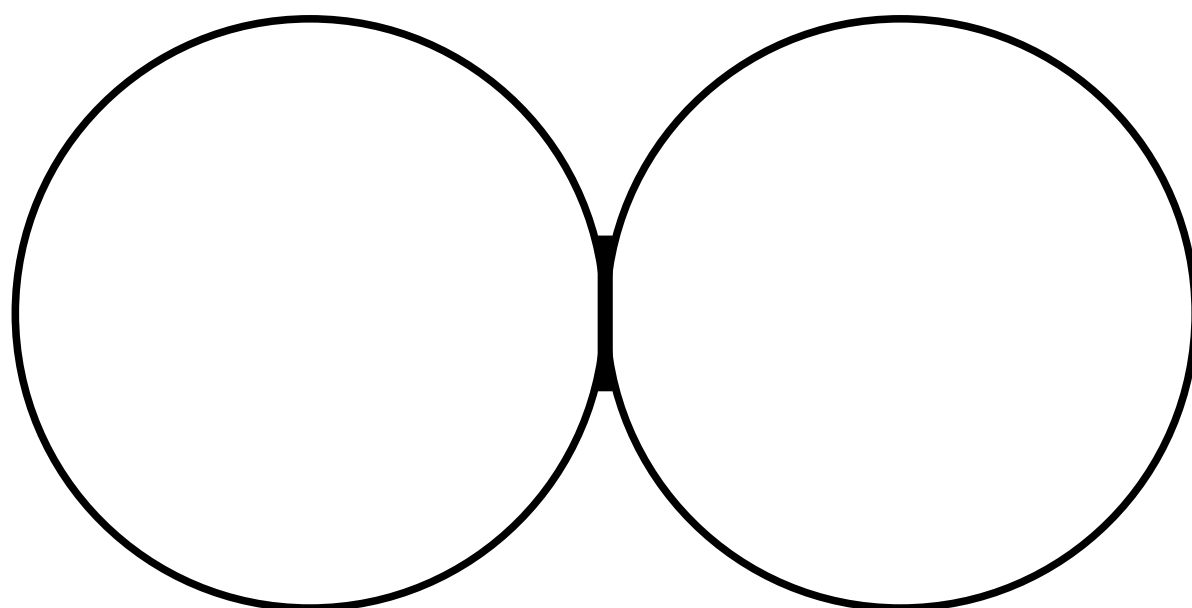
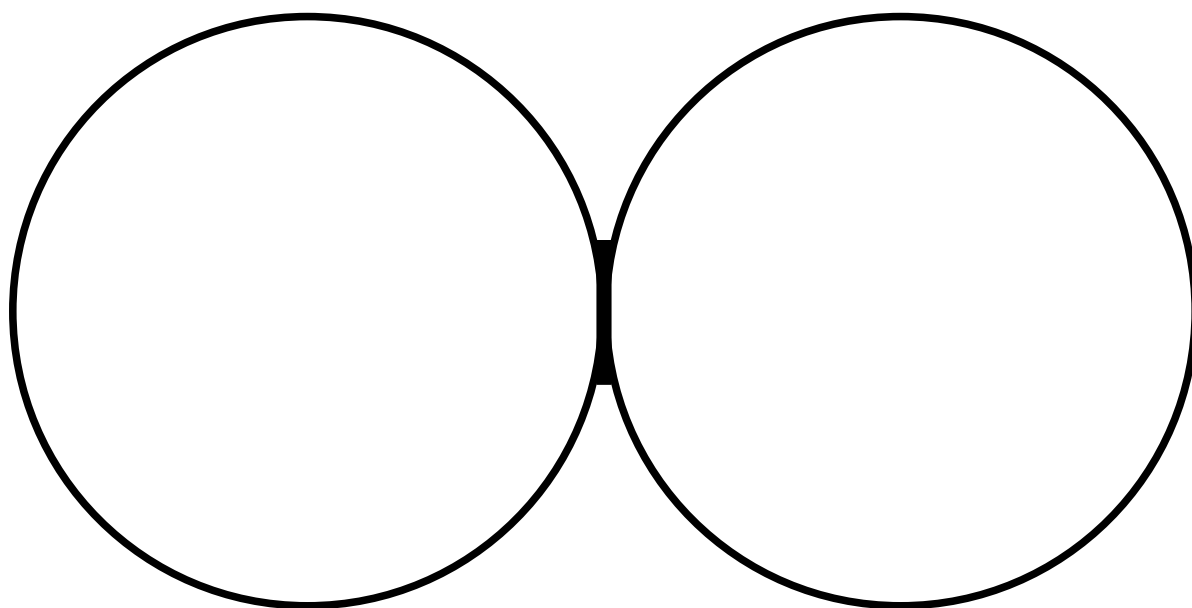
Make your own medals and perform your work at your own Eisteddfod?

- Print off the circle template on [Activity Sheet 6](#).
- Cut out the circle template and stick onto card or cereal packet to make stronger.
- Write 'Best poem', 'Best story', 'Funniest story' or make up your own medal title.
- Decorate your medal.
- Put a hole in the top.
- Attach string or ribbon to hang your medal around your neck.
- Idea: If you have tin foil you can wrap this around the circle and write on with a black felt tip.
- Perform your poem/story in front of your family and award medals.

Materials needed

- [Activity sheet 6](#)
- Scissors
- Coloured card
- Foil (optional)
- Ribbon/string
- Coloured pens/pencils





TREMENDOUS TAILORS



Daniel Owen was born in Mold and was one of the first novelists to write in Welsh in the Victorian period. He worked in a tailor shop where he could discuss his poems and stories with the people he worked with and visitors to the shop. His job was to make and repair clothing.

Can you:
Become a Victorian tailor?

- Use [Activity Sheet 7](#) and the photographs to inspire you.
- Draw/cut out the outline of the figure.
- Draw your own Victorian clothing using the photographs for inspiration. Remember accessories!

Materials needed

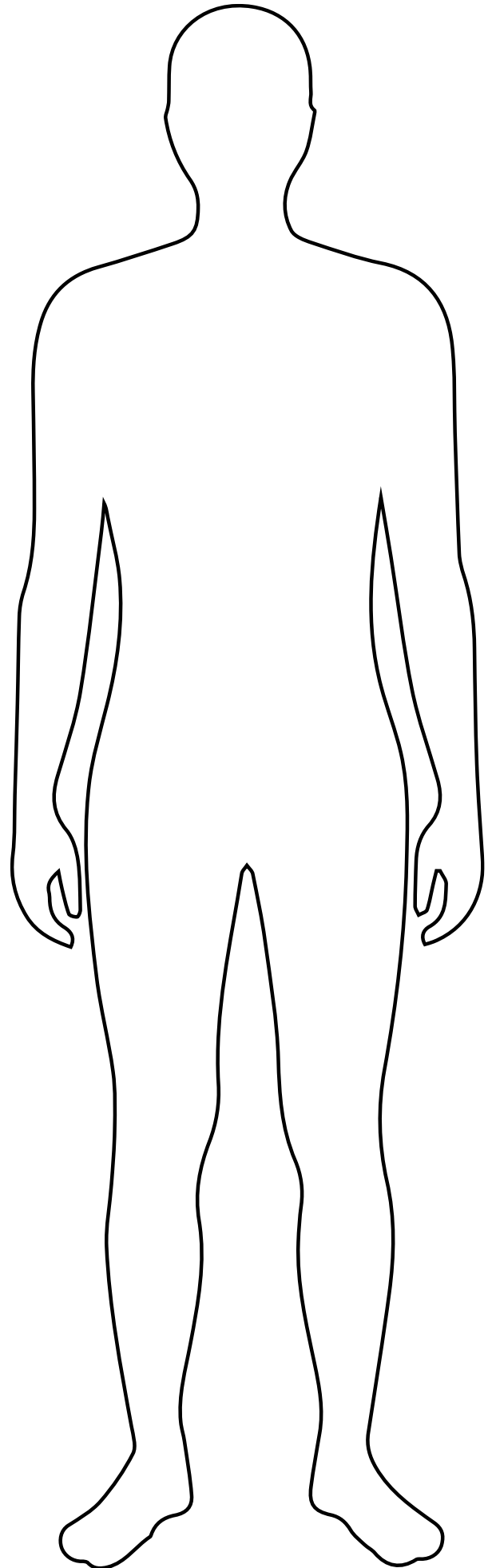
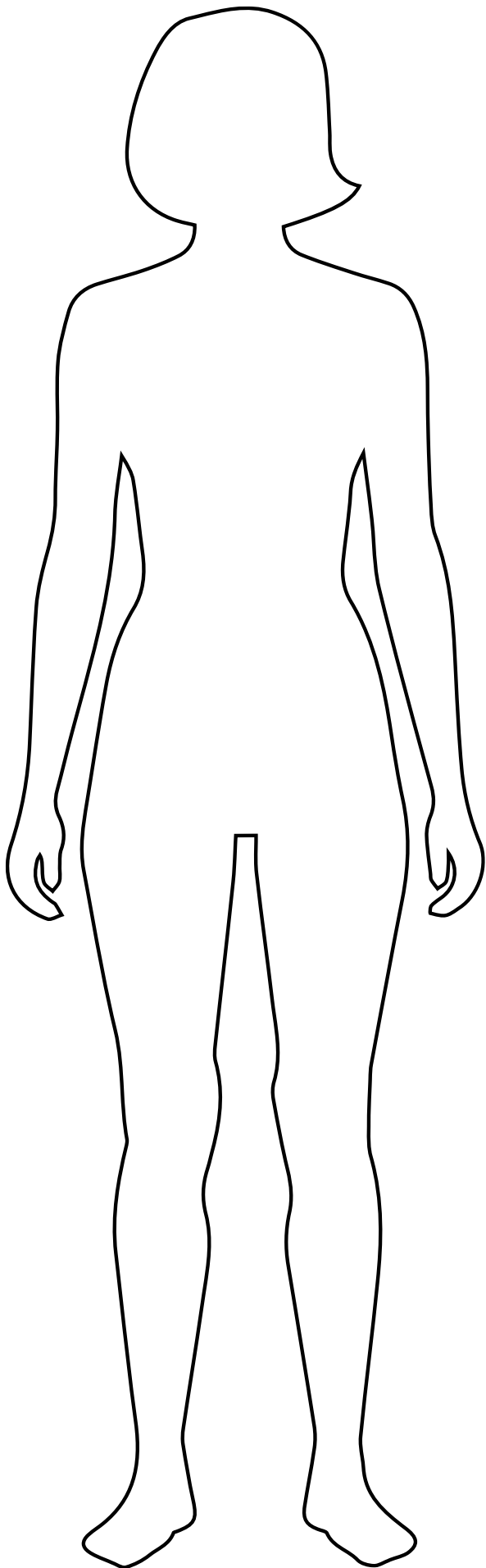
- [Activity Sheet 7](#)
- Pencil
- Coloured pencils /pencils
- Scissors
- Glue



Daniel Owen
Flintshire Museum Service

Ray Davis Collection, David Rowe





HIGH STREET CREATORS



In the Victorian period Mold was made up of two main streets and included three bakers, thirteen butchers, twelve grocers and tea dealers, many pubs, eight boot and shoe makers, nine linen and woollen drapers, five milliners and dressmakers, two straw hat makers, ten tailors and a hat manufacturer.

Can you...
Create your own Mold High Street shop?

- Print and cut out template on [Activity Sheet 8](#).
- Choose the shop you will make and add the name. What will be in the windows? Shop owners hung their goods outside the shop so people passing could see what was for sale.
- Colour in your shop and decorate the walls.
- Fold along the black lines and tab lines.
- Glue or Sellotape the tabs to create a box shape.
- If you would like to make the shop sturdier glue onto card, cut out and then follow the above instructions or print directly onto thin card.

Materials needed

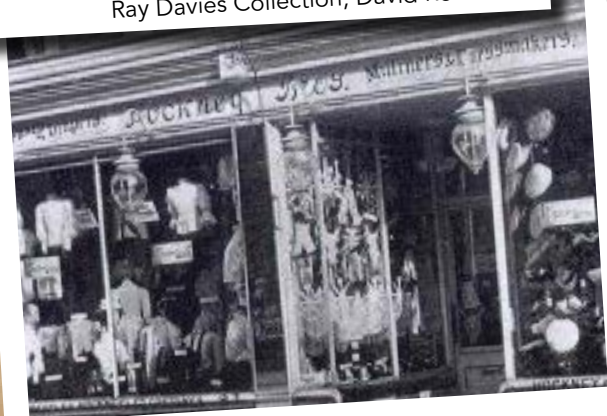
- [Activity Sheet 8](#)
- Pencil
- Coloured pencils /pencils
- Scissors
- Glue/Sellotape



Ray Davies Collection, David Rowe



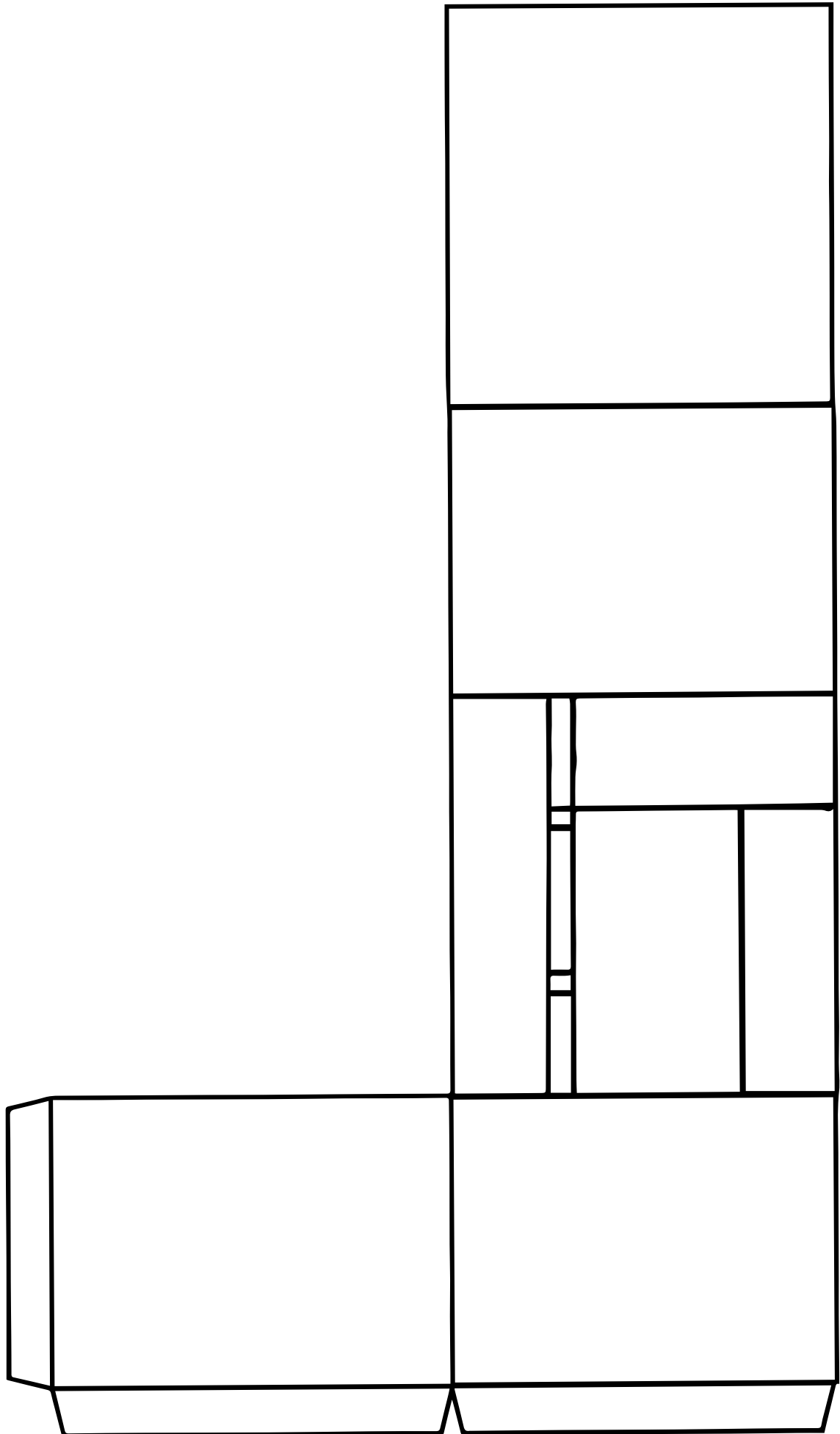
Ray Davies Collection, David Rowe



Bedford Borough Council



Ray Davies Collection, David Rowe



HISTORIC HORSE AND CART



In the Victorian times people travelled by horse and cart. Goods sold in shops were also transported via a horse and cart. You would see a mixture of these going up and down Mold High Street.

Can you...

Make your own horse and cart?

- Print out [Activity Sheet 9](#).
- Cut out (if you have printed on paper use as templates, draw round the shapes onto card and cut out).
- Decorate your horse and cart.
- Glue your two horse bodies together leaving the legs (This helps your horse stand).
- Fold your cart along the lines including the tabs.
- Glue the tabs and fit the bottom of the cart onto them.
- Stick on the four wheels.
- Attach the two reins from the front of the horse to the cart.



Materials needed

- [Activity Sheet 9](#)
- Pencil
- Coloured pencils /pencils
- Scissors
- Glue



Fold your cart along the lines including the tabs.



Glue the tabs and fit the bottom of the cart onto them



Ray Davies Collection, David Rowe



Ray Davies Collection, David Rowe

